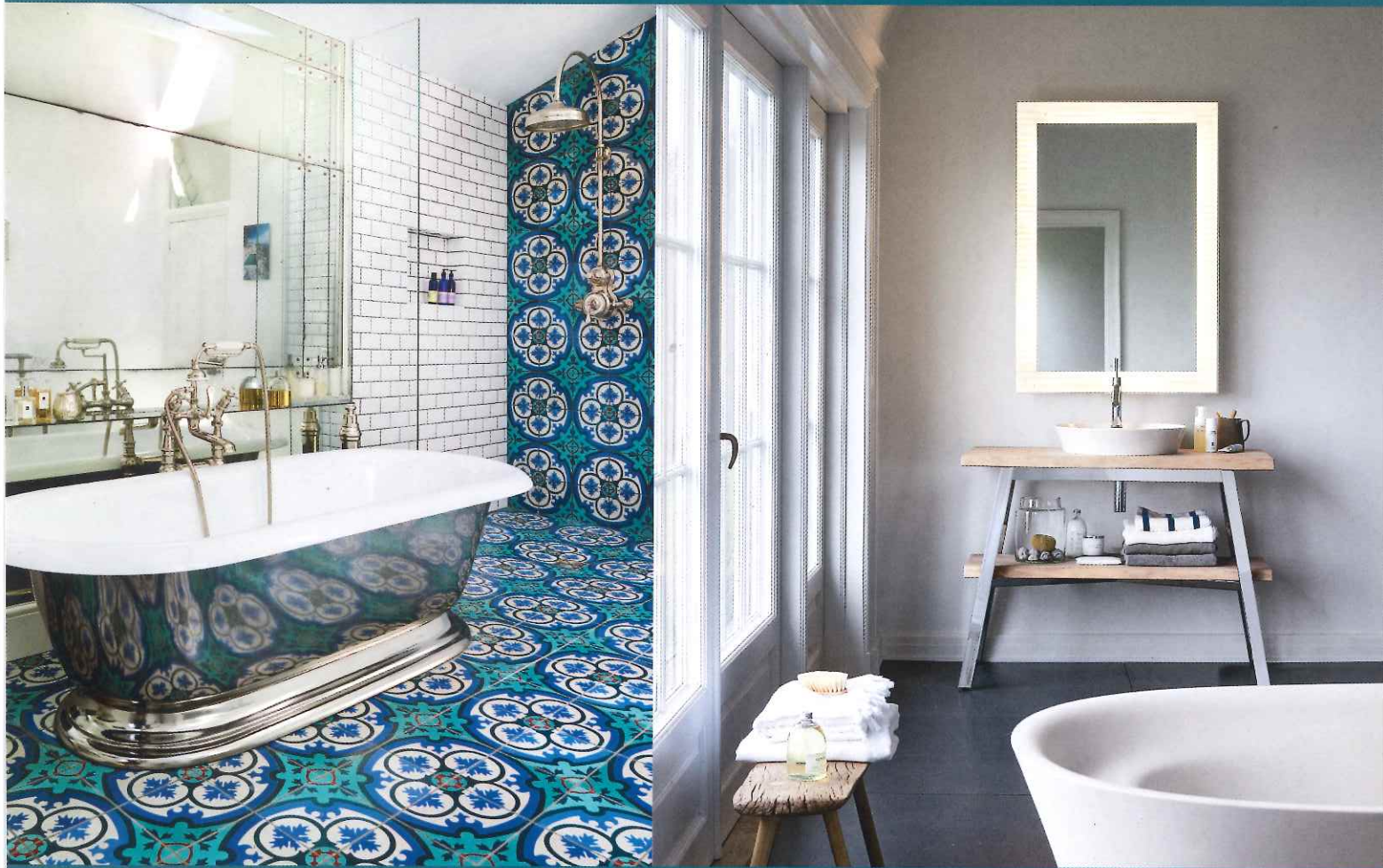


HOMES
& GARDENS



DREAM BATHROOMS

KEY LOOKS FOR 2015

TRENDS ■ CASE STUDIES ■ EXPERT ADVICE ■ SHOPPING



1 |

“

The latest textures are being used to elevate fitted storage solutions into something extra special. Whether it's tactile timber, industrial cement, burnished metal or silky smooth lacquer, there's plenty of choice.”

KEITH ATKINS, director of design, DesignSpace London, designspacelondon.com.



2 |



3 |



4 |



5 |



6 |



7 |

1 | PERFECT FIT For a clutter-free finish, this bespoke vanity unit with Corian top and spray-painted base sweeps along one wall, bridging the bath for a neat, graceful look. A similar bathroom would cost around **£22,000**, Cue & Co, 020 7731 4728, cueandco.com.
2 | A FRESH ANGLE The asymmetrical mirror and a basin set to the right of the vanity unit ensure the sloping ceiling doesn't compromise this room's spacious feel. Solo mirror with built-in LED light panel, **£405**; Driftwood vanity unit, from **£1,131**; Fresco basin, **£586**; all Ripples, 0800 107 0700, ripples.ltd.uk.

3 | LIFT OFF Wall-hung furniture that appears to float tends to look more streamlined than floorstanding pieces. This 2.4m wide A~ system unit in Grey Oak laminate with mirror, which costs around **£7,300** from Alape, 02476 717129, alape.com, offers refined elegance.
4 | HIDDEN ASSETS Drawers within drawers maximise storage space for cosmetics and toiletries in this Prisma 600mm basin unit, from **£721**, Roca, 01530 830080, uk.roca.com.
5 | TEAMING UP Natural materials in modern shapes make a distinctive mix as shown by the Neutra Neos three-drawer wall-hung unit

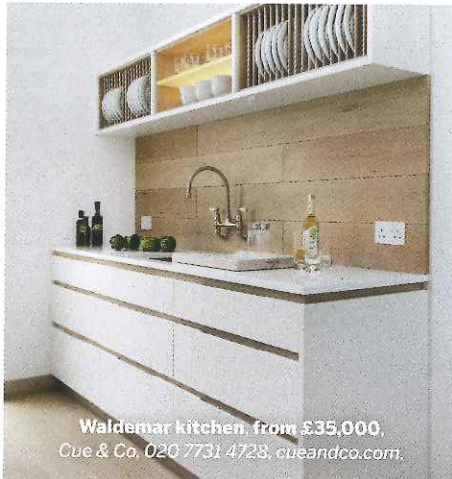
in walnut and Bianco Carrara marble, from **£2,997**, with Duo basins, from **£2,185** each; all CP Hart, 0845 600 1950, cphart.co.uk.
6 | CUBE ROUTE The glossy Jade lacquer of the L-Cube semi-tall cabinet, **£828**, highlights its clean lines and adds interest to a composed, orderly bathroom design. It's shown here with the P3 Comforts pedestal basin, **£298**; both Duravit, 0845 500 7787, duravit.co.uk.
7 | WELL MEASURED This fitted furniture and inlaid marble floor, from **£36,000**, are the work of the bespoke Bath Couture service at Devon & Devon, 020 7221 5137, devon-devon.com.

NATURAL BEAUTY

These appealing pieces are ideal for adding a crafted, tactile element to a scheme



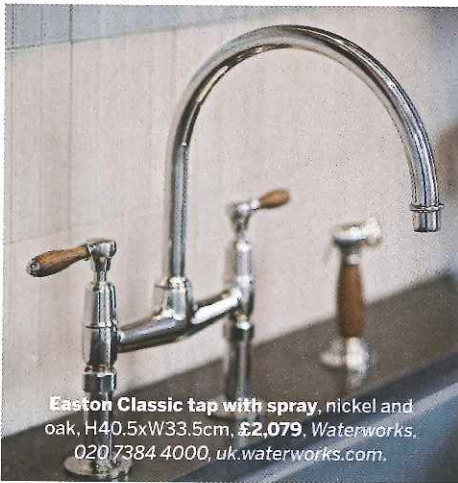
Terho lamp, FSC alder and mouth-blown opal glass, H21.5xdiam24cm, **£330**, *Mater*, 0045 70 26 44 88, mater.dk.



Waldemar kitchen, from **£35,000**, *Cue & Co.* 020 7731 4728, cueandco.com.



Gray & Willow Acacia wood utensils, L18cm, **£12 each**, *House of Fraser*, 0345 602 1073, houseoffraser.co.uk.



Easton Classic tap with spray, nickel and oak, H40.5xW33.5cm, **£2,079**, *Waterworks*, 020 7384 4000, uk.waterworks.com.



Bamboo Garden cordless kettle, H26.5xdiam16cm, **£34.90**, *Klarstein*, 020 3318 3951, klarstein.co.uk.



Bar Stool Two, ash, and ash and walnut, H76xW30xD30cm, **£450 each**, *Another Country*, 020 7486 3251, anothercountry.com.



Reclaimed Oak dining table, H76xL230x W100cm, **£2,860**, *Black Orchid Interiors*, 0844 854 2794, blackorchidinteriors.co.uk.



Peg board, H65xW114cm, from **£215** including ten pegs and two shelves, *Kreisdesign*, 020 7837 0820, kreisdesign.com.



Morley Crank salt and pepper mills, walnut-stained beech, H16.5xW10.5xD7cm, **£29.99 each**, *Cole & Mason*, 0870 160 1319, coleandmason.com.

FEATURE LINDA CLAYTON